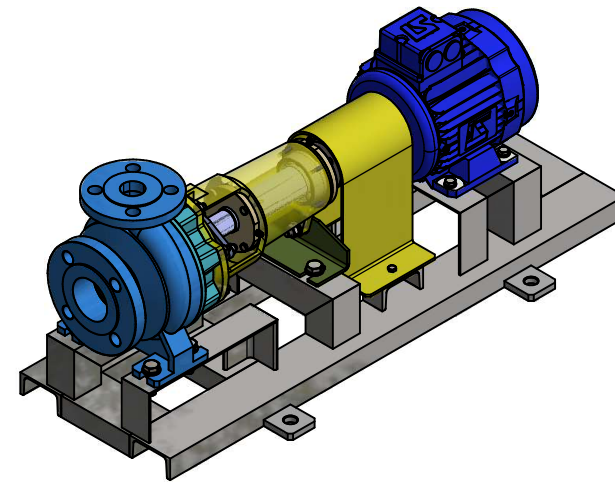
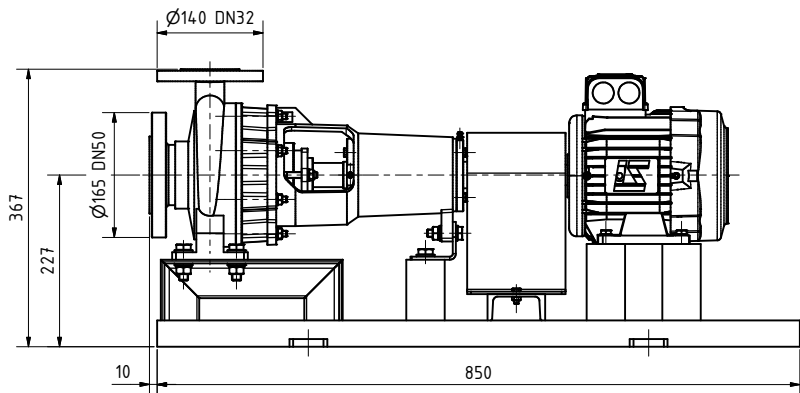
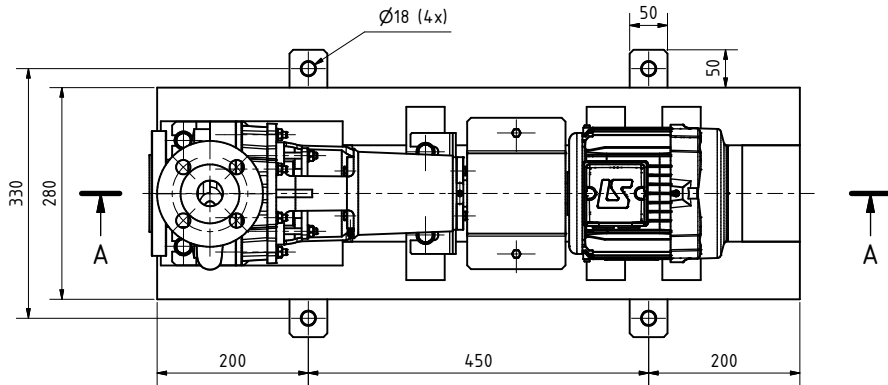
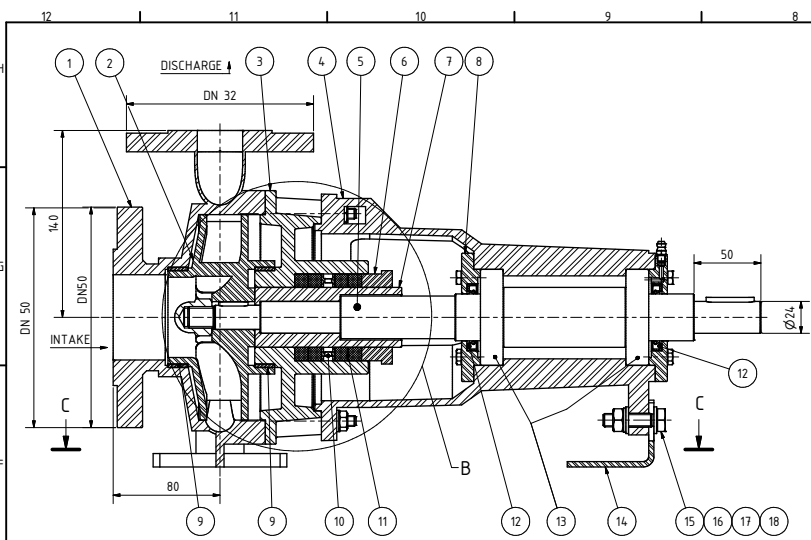


PARTS LIST			
ITEM	QTY	PART NUMBER	DESCRIPTION
1	1	CENTRIFUGAL PUMP N 32 - 125	
2	1	BASE PUMP	
3	1	MOTOR COUPLING	
4	1	PUMP PROTECTION	
5	1	MOTOR	
6	6	DIN 934 - M12	Hex Nut
7	6	DIN 128 - A12	Spring Washer
8	12	DIN 125 - A 13	Washer
9	6	DIN 933 - M12 x 40	Hex-Head Bolt
12	4	DIN 933 - M8 x 35	Hex-Head Bolt
13	4	DIN 126 - 9	Washers for hexagon bolts
14	4	DIN 128 - A8	Spring Washer
15	4	DIN 934 - M8	Hex Nut
10	2	DIN 933 - M16 x 16	Hex-Head Bolt
11	2	DIN 934 - M6	Hex Nut

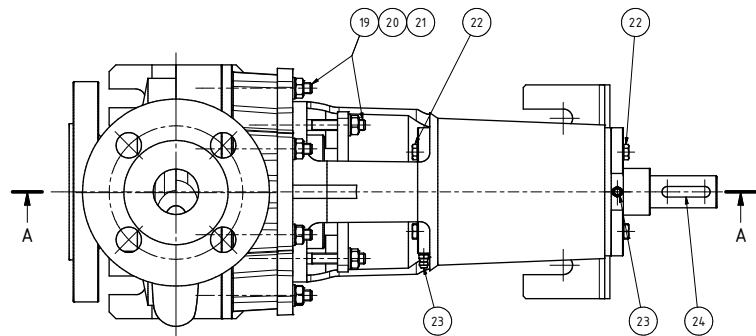
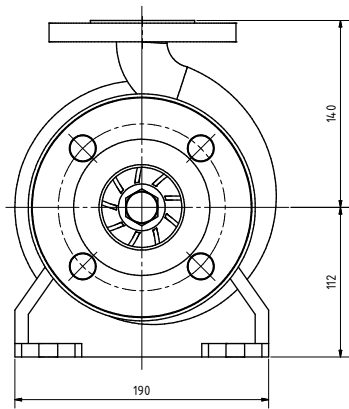


DESIGN FOR EDUCACIONAL USE ONLY

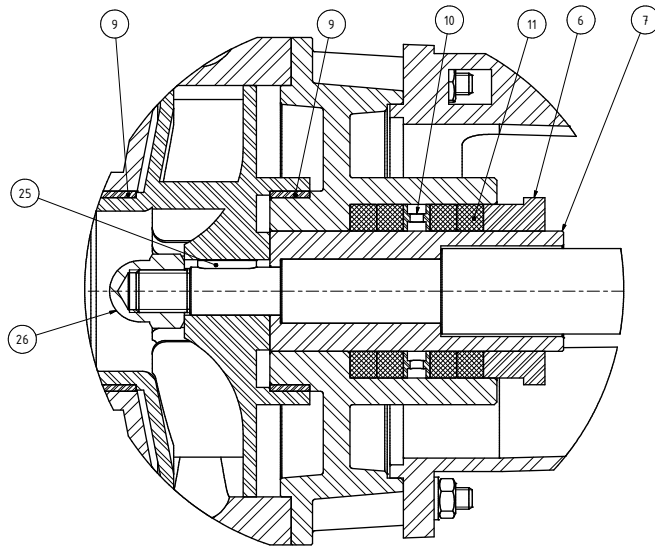
		Date	Name		
		Drawn	16/04/2018	AugustoBro	
		Checked			
		Standard			
				CENTRIFUGAL PUMP ASSEMBLY	1
					A2
State	Changes	Date	Name		



SECTION A-A ( 1 : 2 )

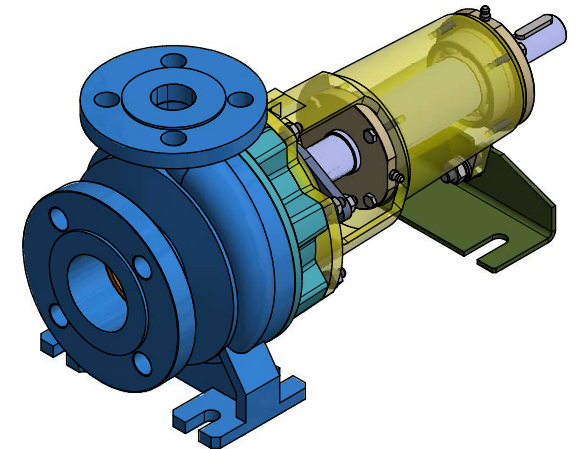


SECTION C-C ( 1 : 2 )



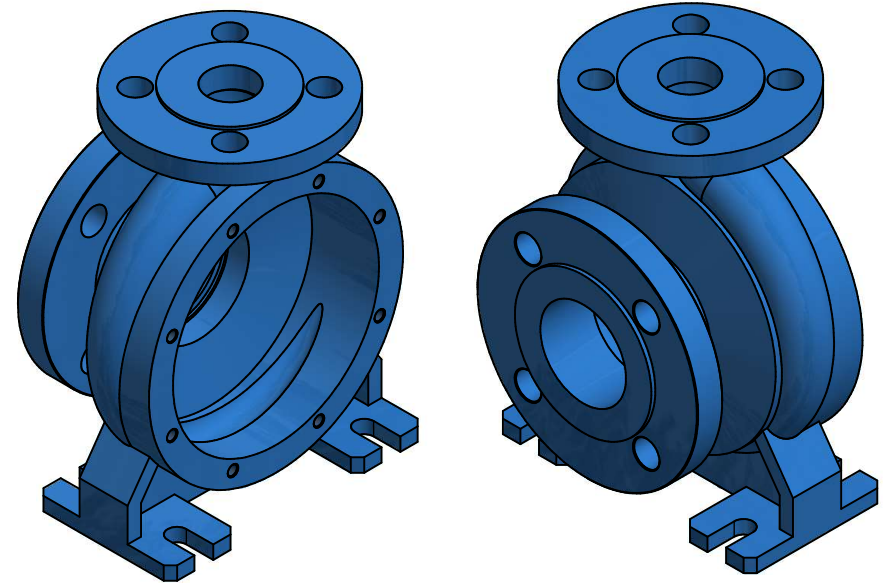
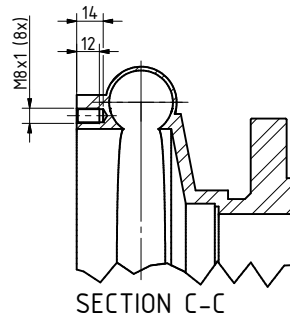
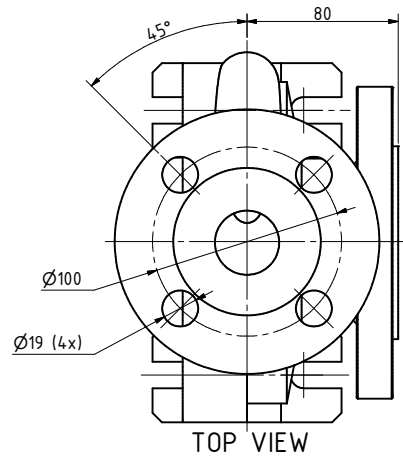
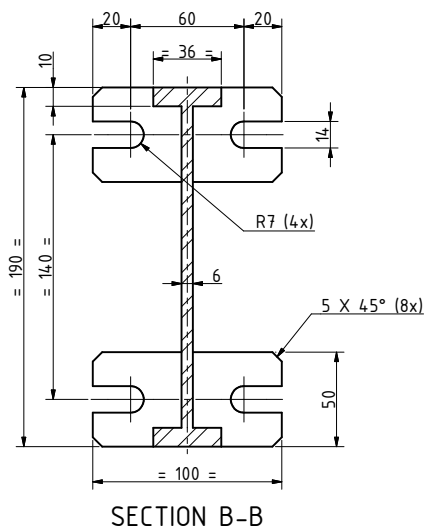
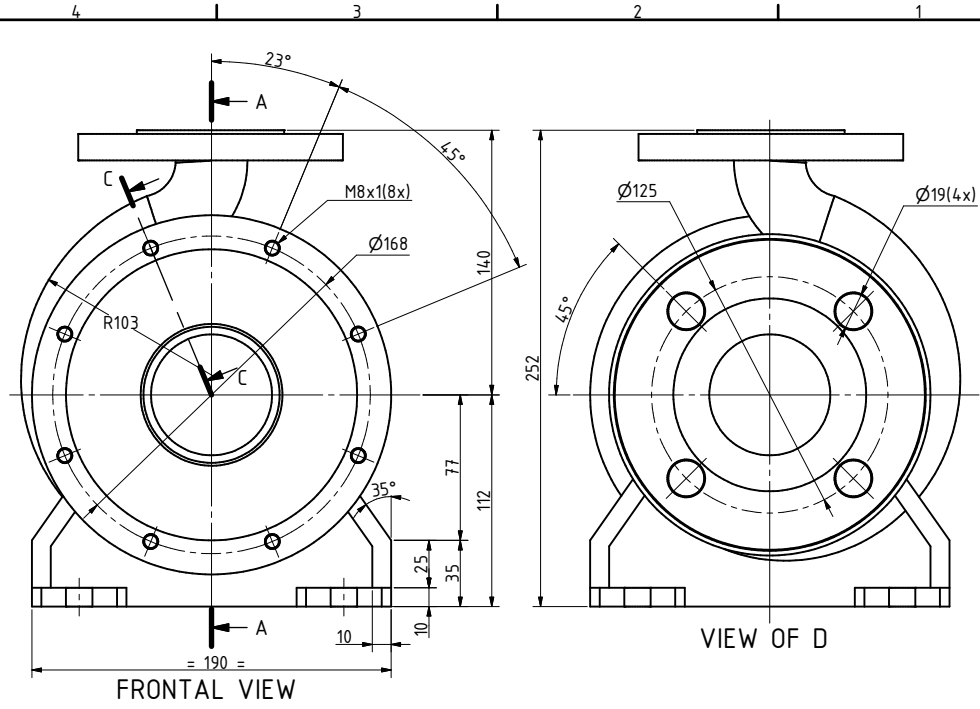
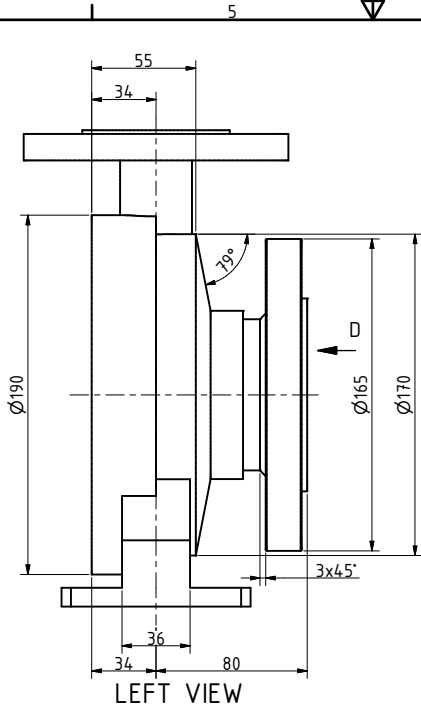
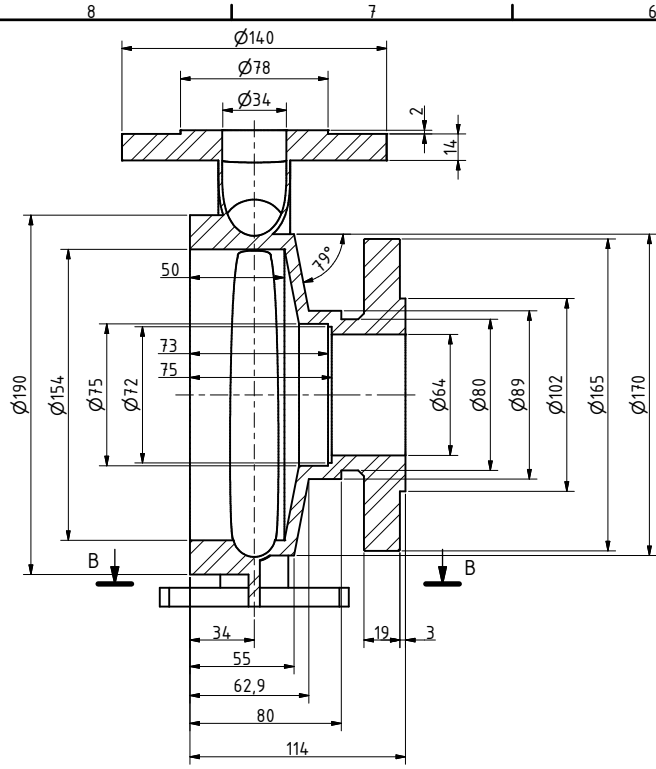
DETAIL B ( 1 : 1 )

		PARTS LIST	
ITEM	QTY	PART NUMBER	DESCRIPTION
1	1		PUMP CASING
2	1		PUMP IMPELLER
3	1		COUPLING
4	1		HOUSE BEARING
5	1		SHAFT
6	1		PUMP PACKING GLAND
7	1		SEAL CHAMBER
8	2		BEARING COVER
9	2		WEAR RING
10	1		PUMP LANTERN RING
11	4		PUMP PACKING SET
12	2	DIN 3760 - A - 35 x 50 x 7 - NBR	Shaft Seal Ring
13	2	DIN 625 SKF - SKF 6207-2RS1	
14	1		SUPPORT
15	1	DIN 933 - M10 x 4.0	Hex-Head Bolt
16	2	DIN 125 - A 10,5	Washer
17	1	DIN 128 - A10	Spring Washer
18	1	DIN 934 - M10	Hex Nut
19	10	DIN 835 - M8 x 70	Double End Stud
20	10	DIN 125 - A 8,4	Washer
21	10	DIN 934 - M8	Hex Nut
22	8	DIN 933 - M6 x 25	Hex-Head Bolt
23	2	DIN 714.12 - AM 6 (coned short)	Lubricating Nipple, coned Type A
24	1	DIN 6885 - A 8 x 7 x 36	Parallel Key
25	1	DIN 6885 - A 6 x 6 x 22	Parallel Key
26	1	DIN 1587 - M16	Hexagon Domed Cap Nuts



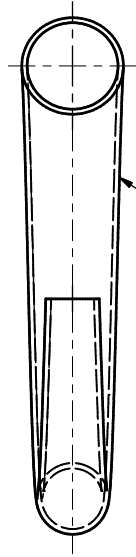
DESIGN FOR EDUCACIONAL USE ONLY

		Date	Name
Drawn	10/04/2018	Augusto B...	
Checked			
Standard			
			1
CENTRIFUGAL PUMP N 32 - 125			A.1
Scale	Changes	Date	Name



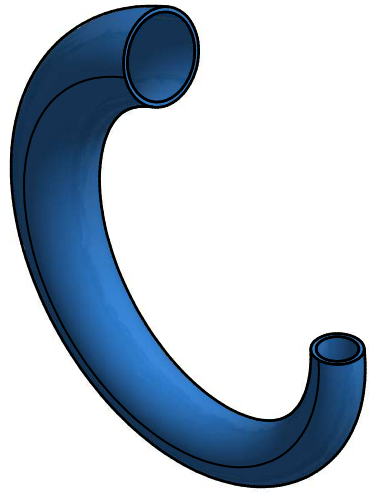
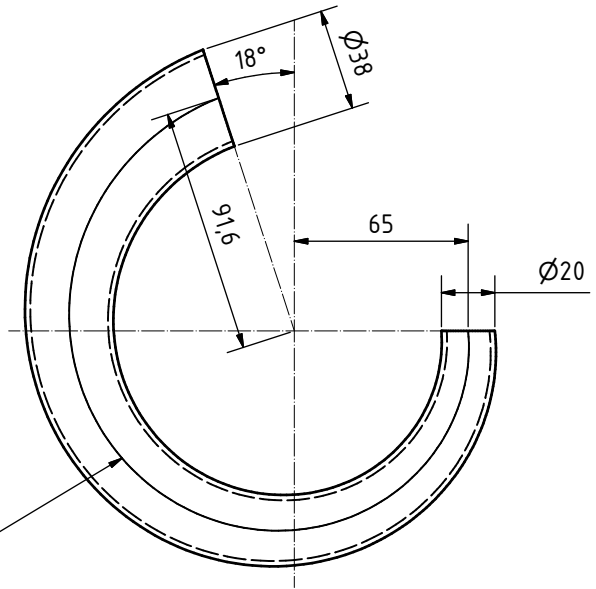
Date		Name	
Drawn	01/04/2018	AugustoBro	
Checked			
Standard			
PUMP CASING			1
			A2

DESIGN FOR EDUCACIONAL USE ONLY



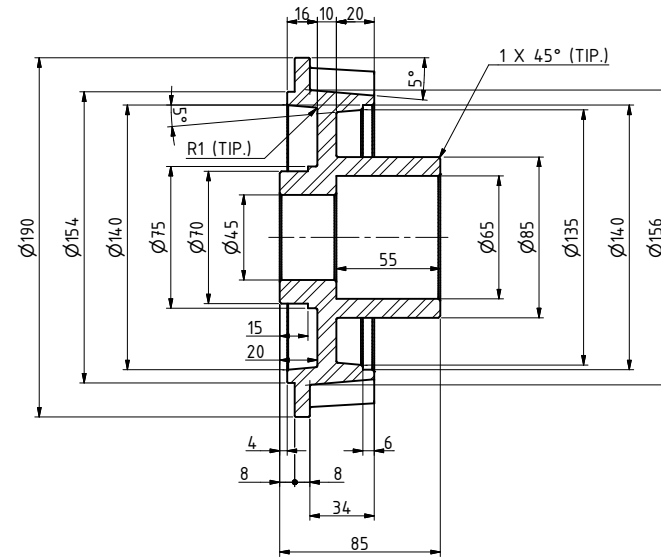
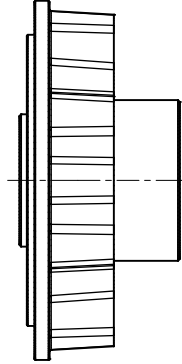
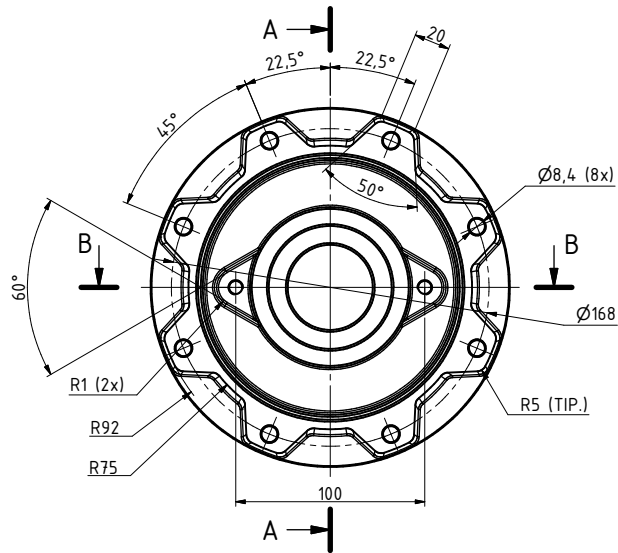
PAREDE ESPESSURA 2,0mm

COIL TYPE SPIRAL  
 PITCH 38,0  
 REVOLUTION 0,70 ul

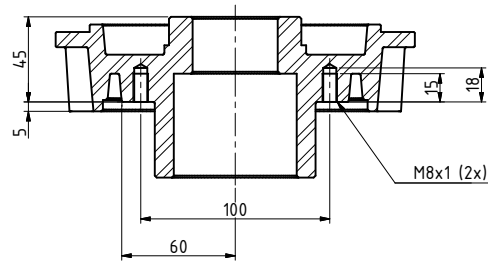


DESIGN FOR EDUCACIONAL USE ONLY

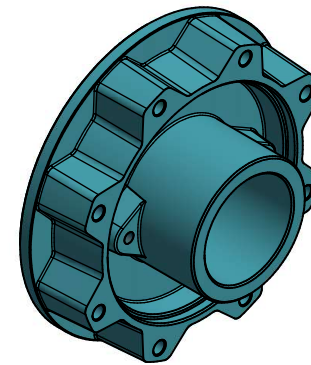
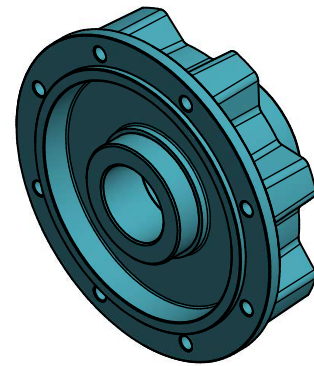
				Date	Name		
				Drawn	19/04/2018	AugustoBro	
				Checked			
				Standard			
						PUMP CASING SPIRAL	
						1	
						A3	
State	Changes	Date	Name				



SECTION A-A ( 1 : 2 )

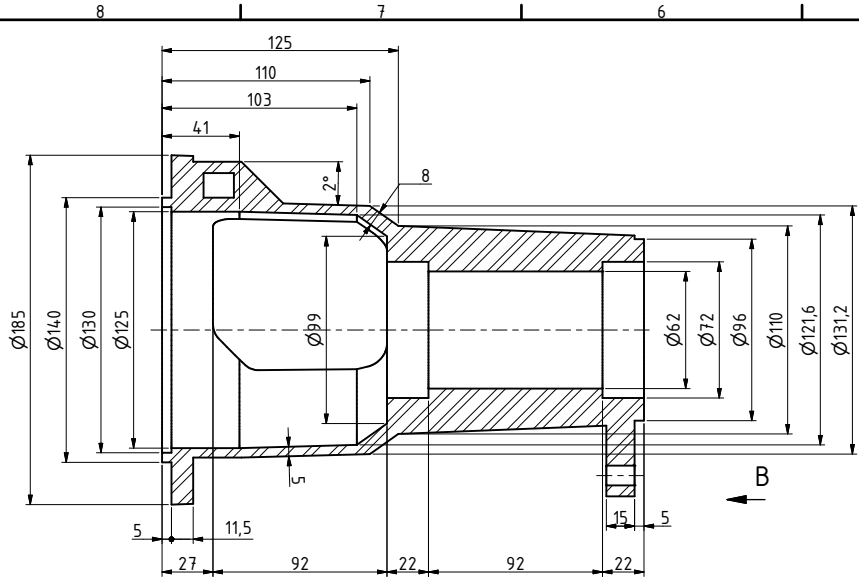


SECTION B-B ( 1 : 2 )

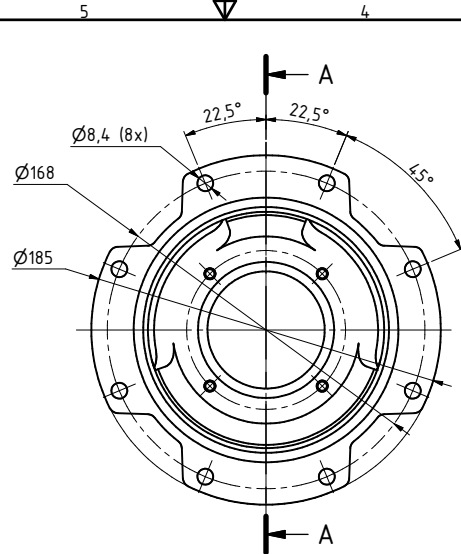


DESIGN FOR EDUCACIONAL USE ONLY

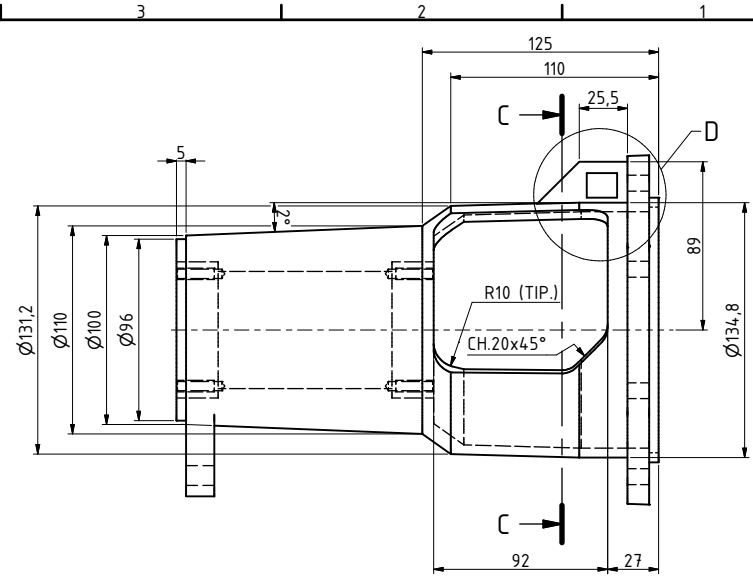
		Date	Name		
		Drawn	17/04/2018	AugustoBro	
		Checked			
		Standard			
					PUMP COUPLING
					1
					A2
State	Changes	Date	Name		



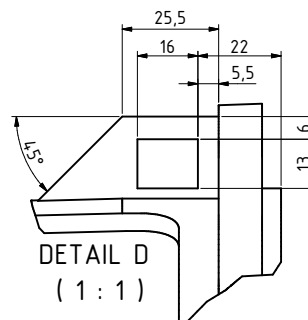
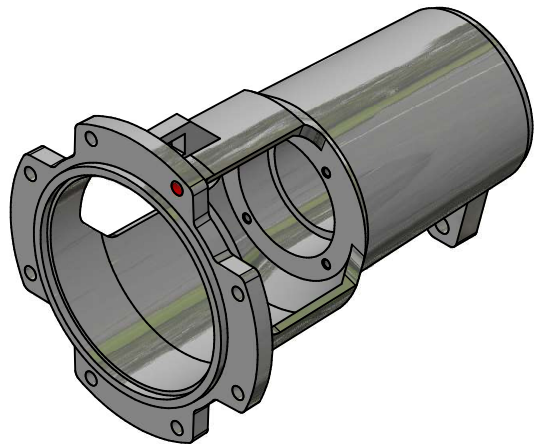
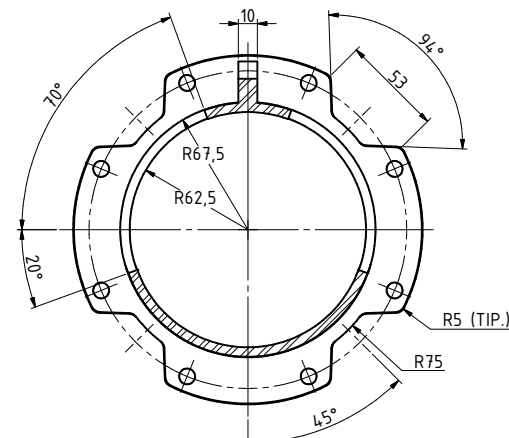
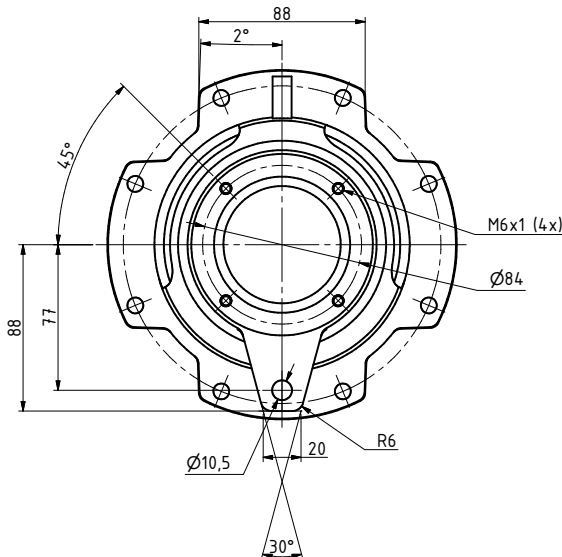
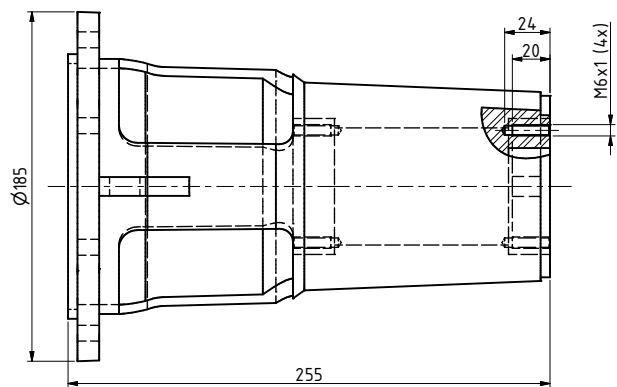
SECTION A-A ( 1 : 2 )



VIEW OF B ( 1 : 2 )



SECTION C-C ( 1 : 2 )

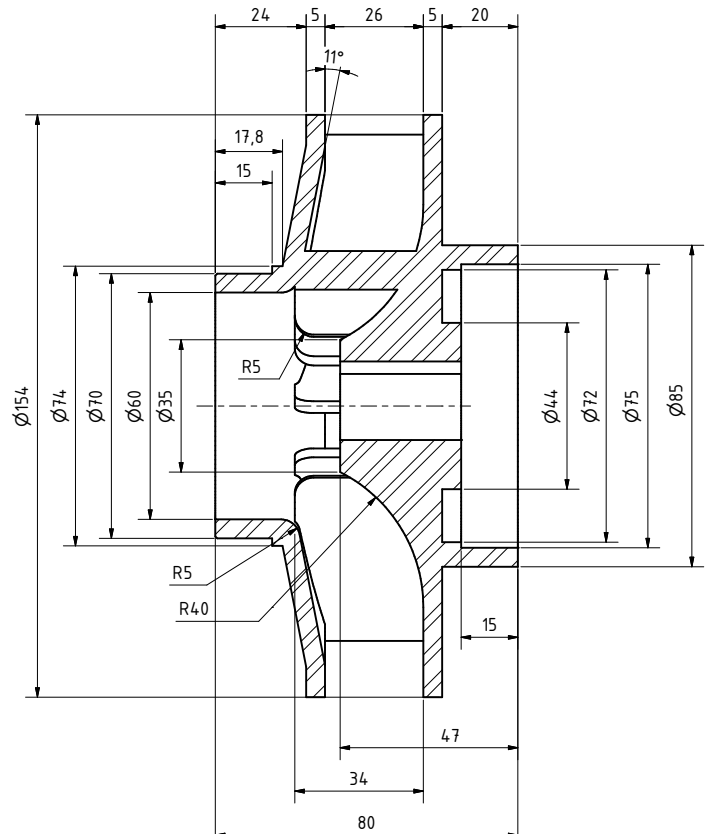


DETAIL D ( 1 : 1 )

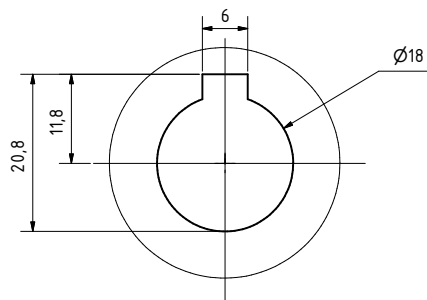
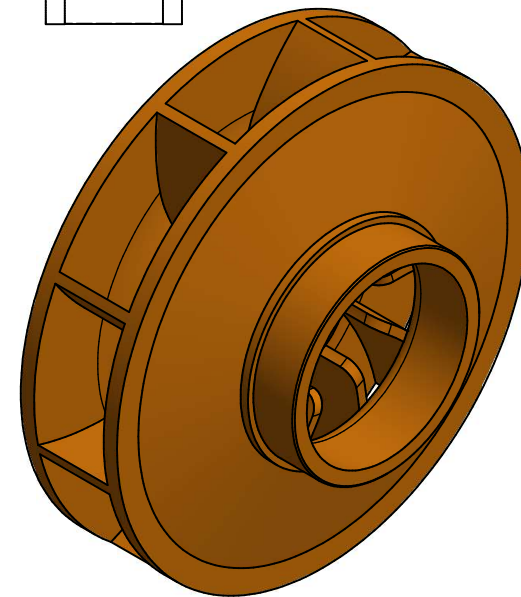
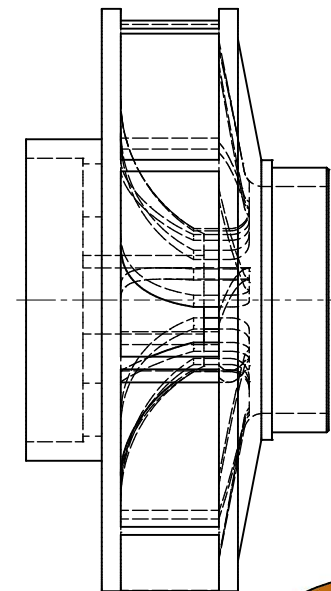
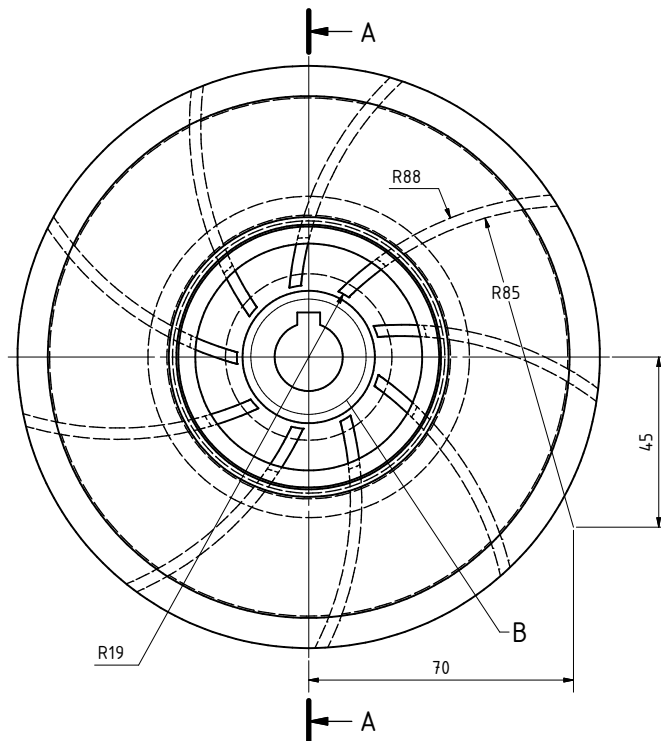
DESIGN FOR EDUCACIONAL USE ONLY

Date		Name	
Drawn	17/04/2018	AugustoBro	
Checked			
Standard			
State			Changes
Date			Name
HOUSE BEARING			1
			A2

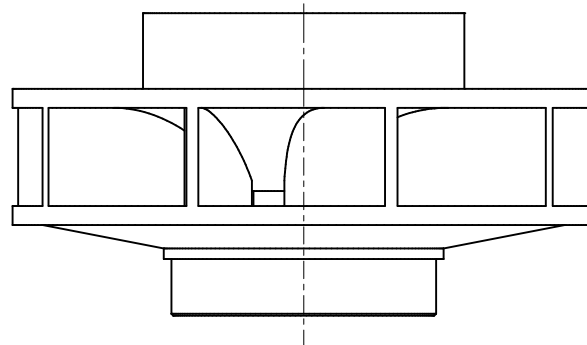




SECTION A-A ( 1 : 1 )

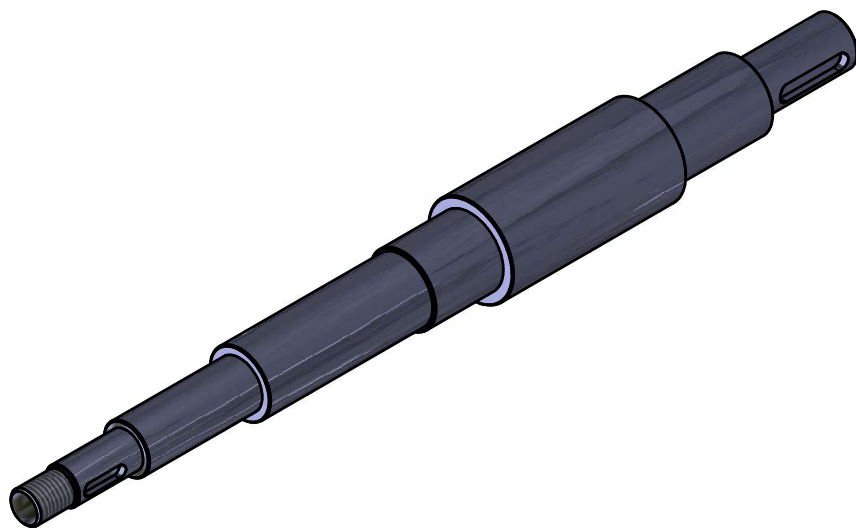
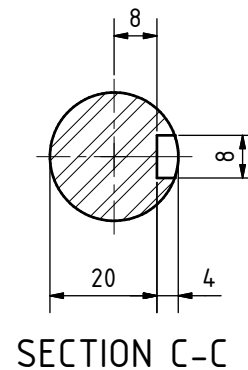
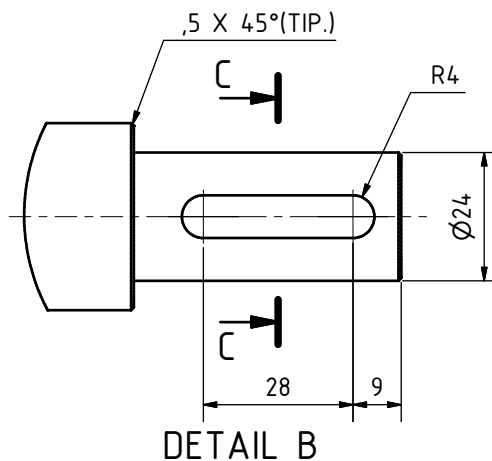
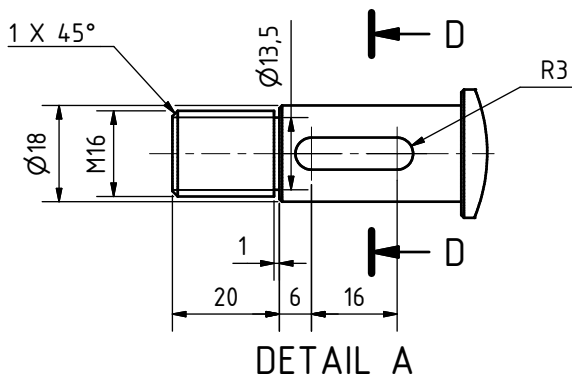
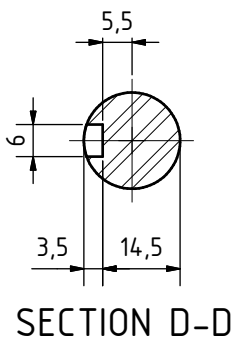
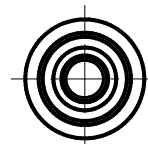
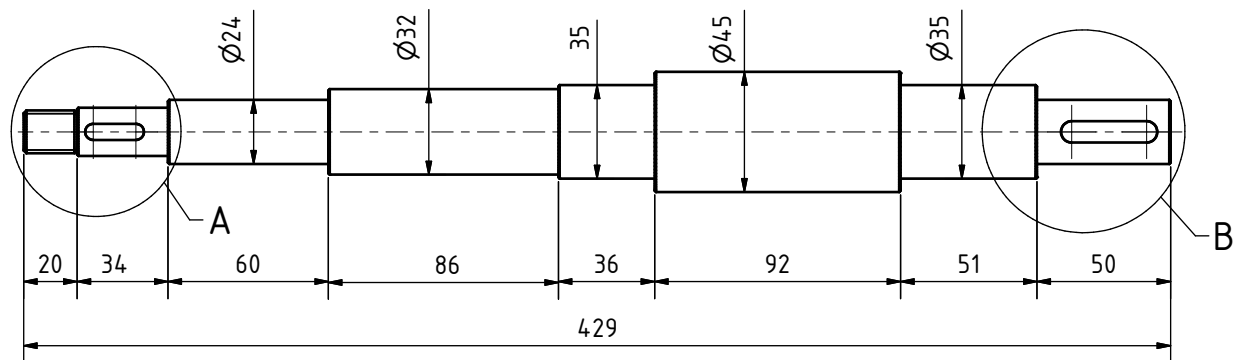


DETAIL B ( 2 : 1 )



DESIGN FOR EDUCACIONAL USE ONLY

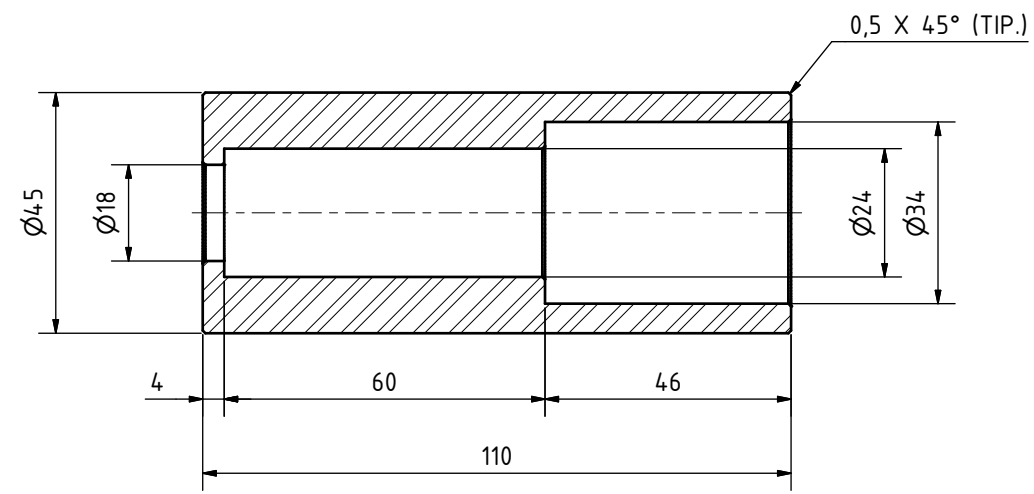
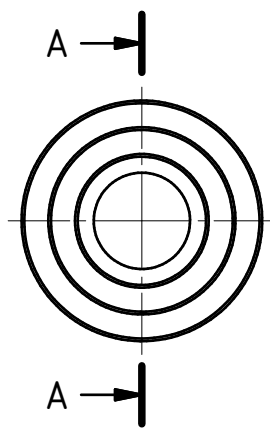
Date		Name	
Drawn	18/04/2018	AugustoBro	
Checked			
Standard			
PUMP IMPELLER			1
			A2



DESIGN FOR EDUCACIONAL USE ONLY

				Date	Name
				Drawn	17/04/2018 AugustoBro
				Checked	
				Standard	
				SHAFT	
				1	
				A3	
State	Changes	Date	Name		





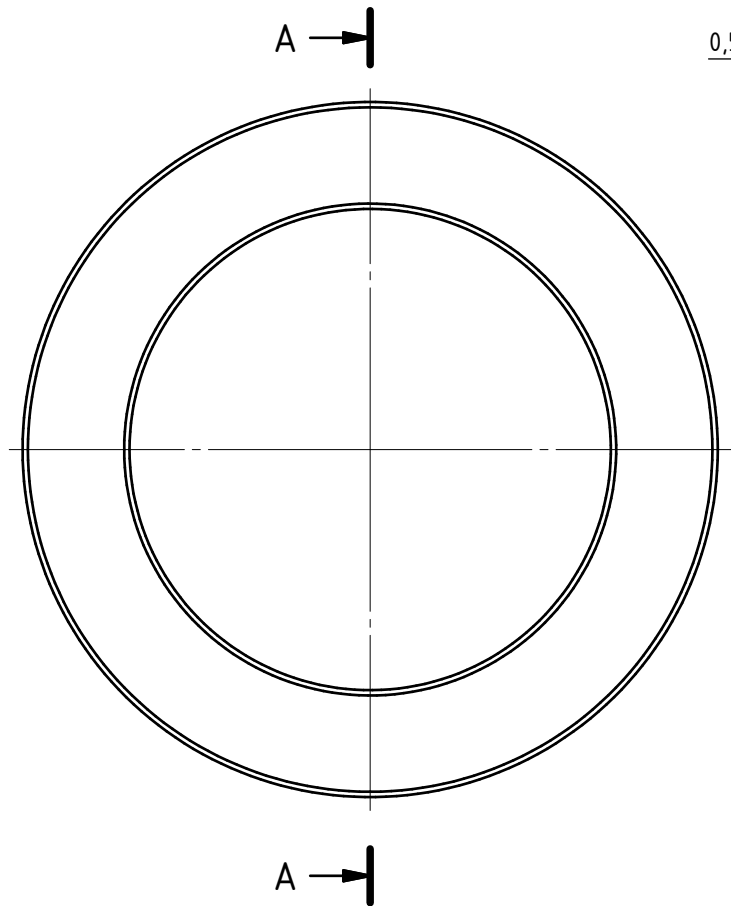
SECTION A-A ( 1 : 1 )



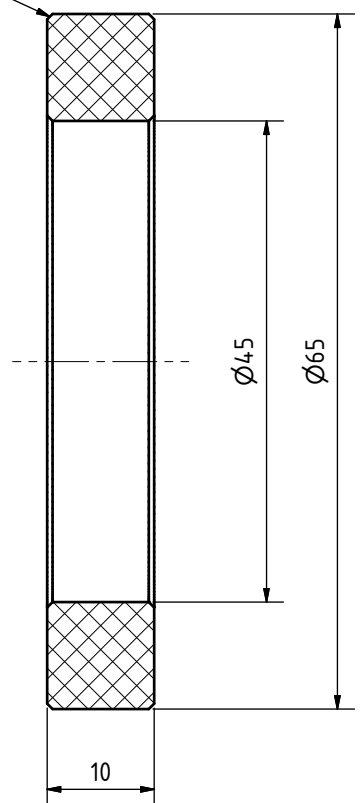
DESIGN FOR EDUCACIONAL USE ONLY

				Date	Name					
				Drawn	18/04/2018	AugustoBro				
				Checked						
				Standard						
State	Changes	Date	Name					Seal Chamber	1	
									A3	





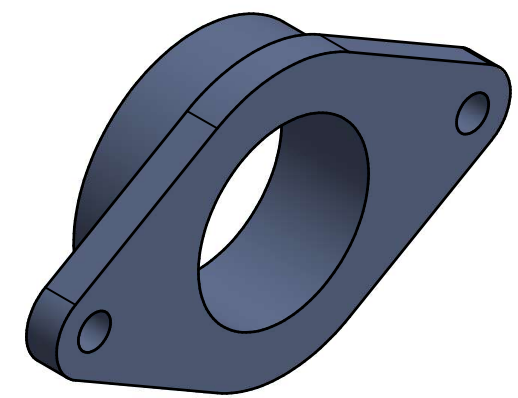
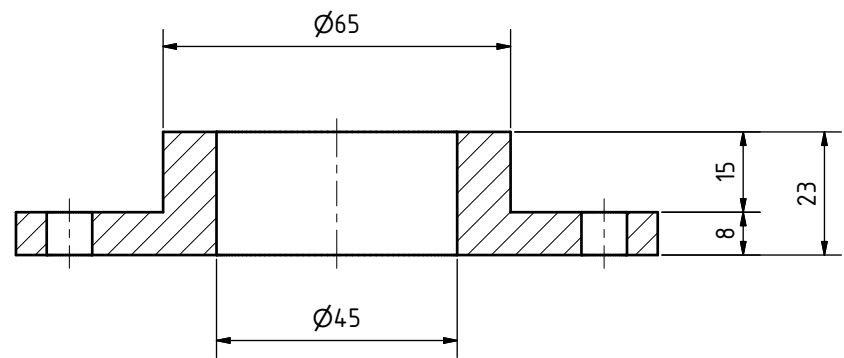
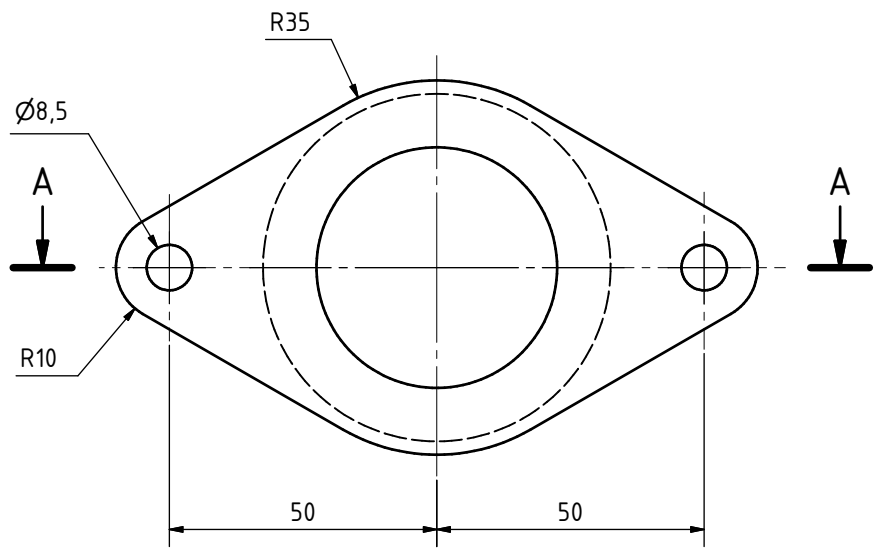
0,5 X 45°(TIP.)



SECTION A-A ( 2 : 1 )

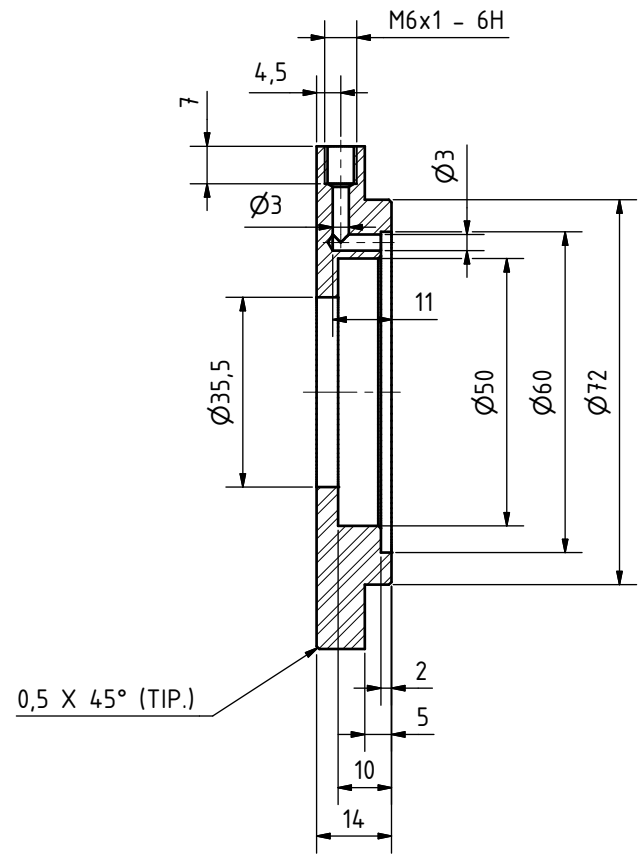
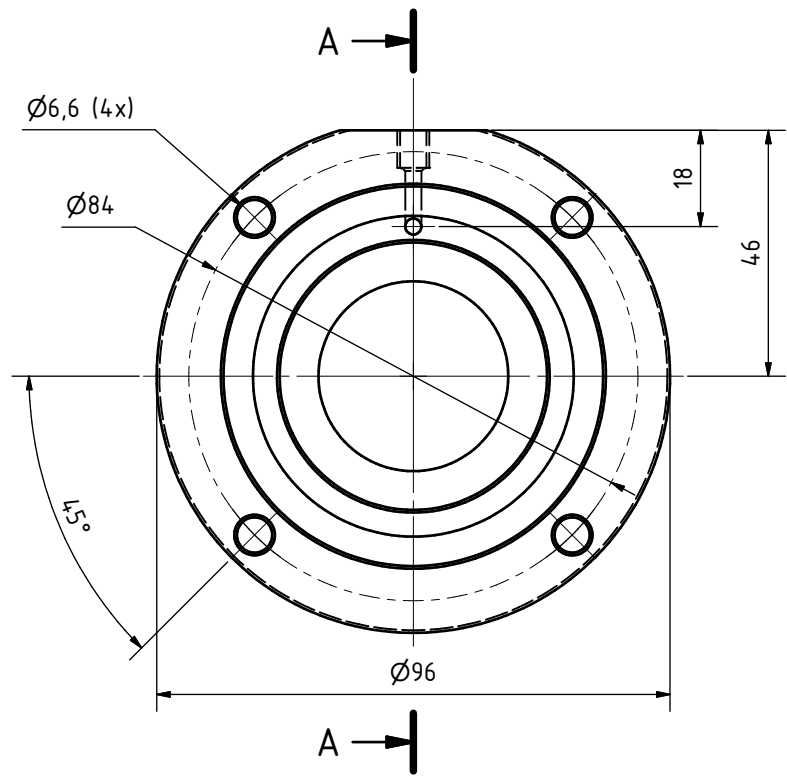
DESIGN FOR EDUCACIONAL USE ONLY

				Date	Name		
				Drawn	20/04/2018	AugustoBro	
				Checked			
				Standard			
						PUMP PACKING SET	
						1	
						A3	
State	Changes	Date	Name				

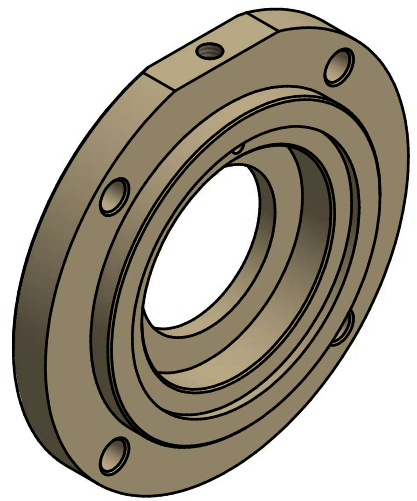


DESIGN FOR EDUCACIONAL USE ONLY

				Date	Name				
				Drawn	18/04/2018 AugustoBro				
				Checked					
				Standard					
						PUMP PACKING GLAND		1	
								A3	
State	Changes	Date	Name						



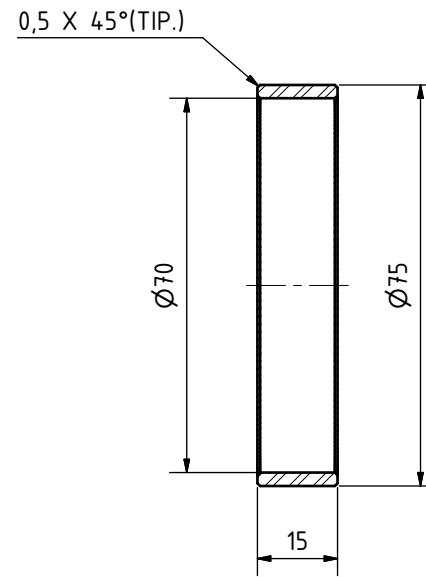
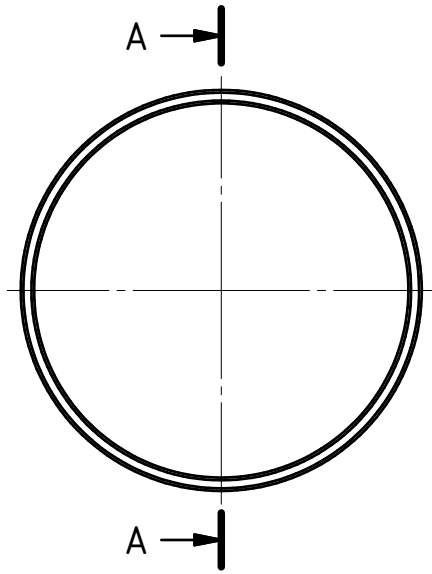
SECTION A-A ( 1 : 1 )



DESIGN FOR EDUCACIONAL USE ONLY

		Date	Name		
		Drawn	19/04/2018	AugustoBro	
		Checked			
		Standard			
				BEARING COVER	
				1	
				A3	
State	Changes	Date	Name		





SECTION A-A ( 1 : 1 )

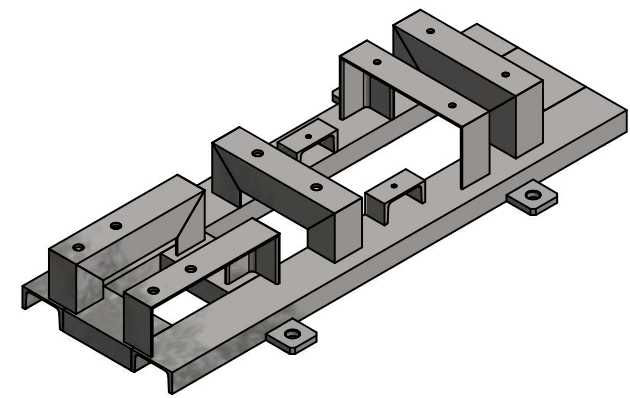
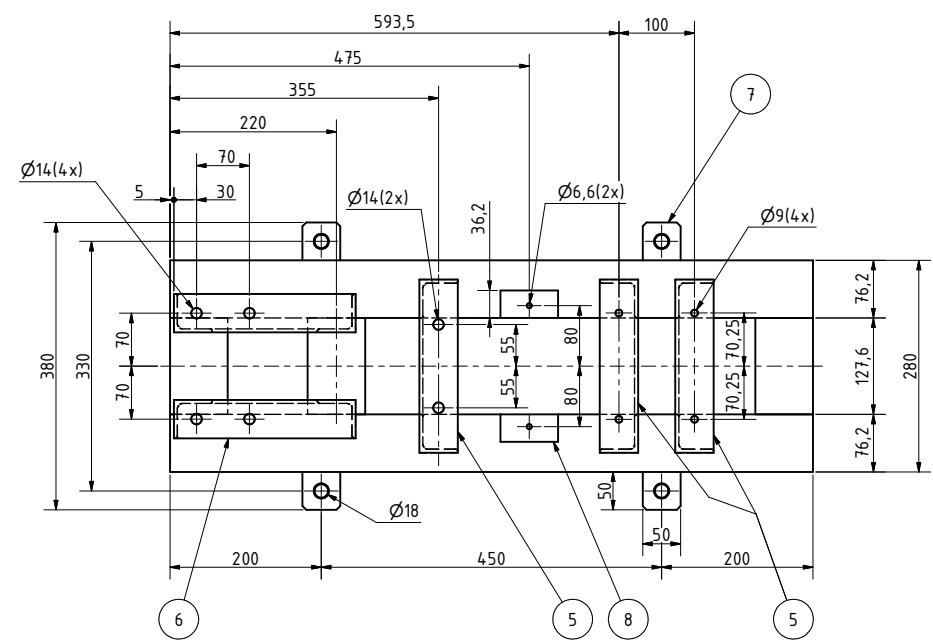
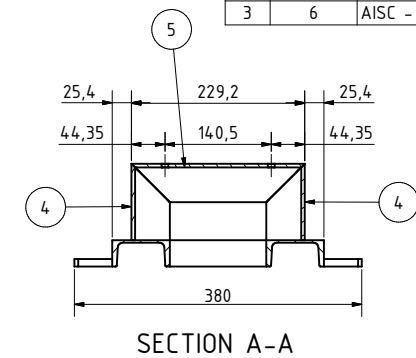
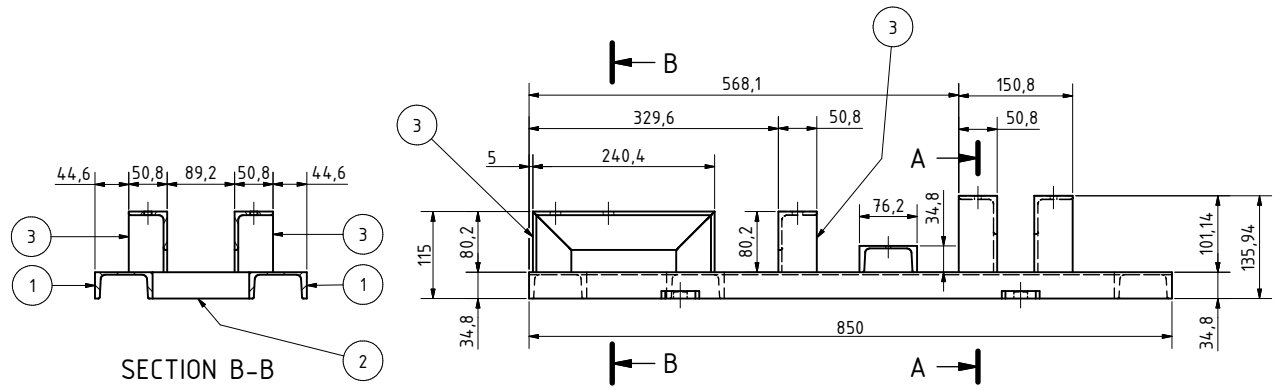


DESIGN FOR EDUCACIONAL USE ONLY

				Date	Name
Drawn	18/04/2018	AugustoBro			
Checked					
Standard					
				WEAR RING	
				A3	



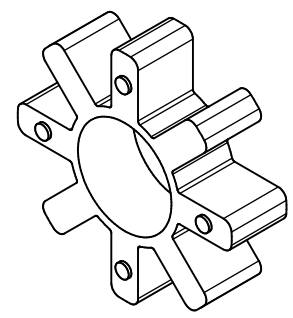
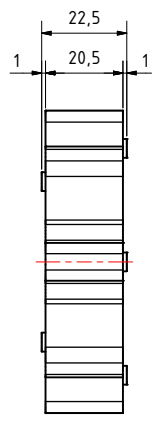
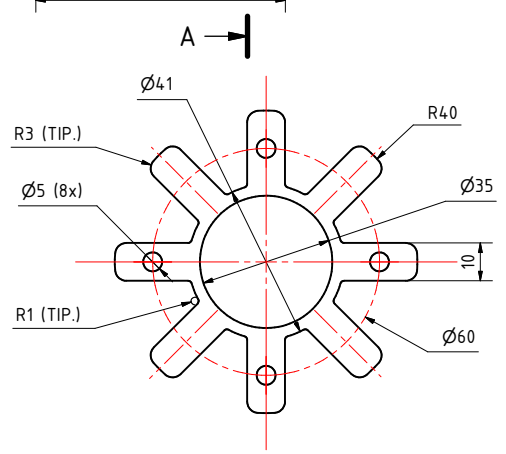
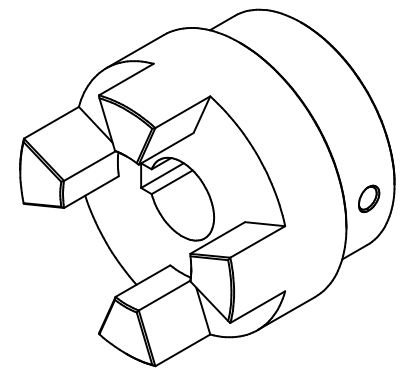
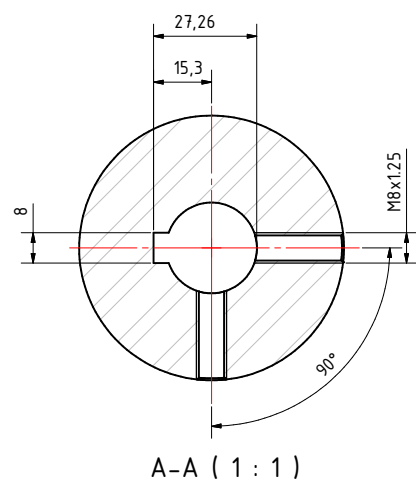
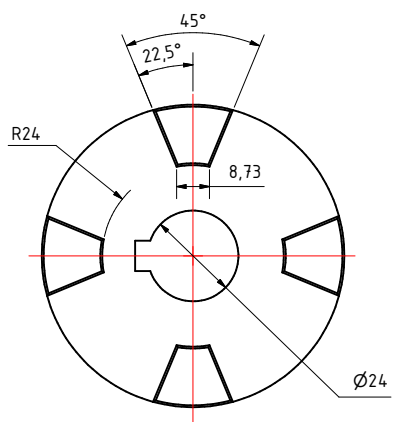
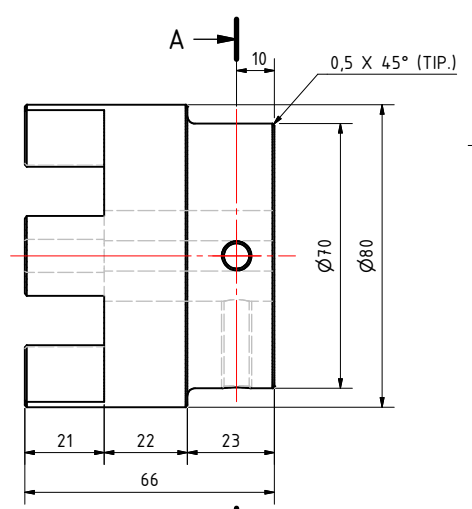
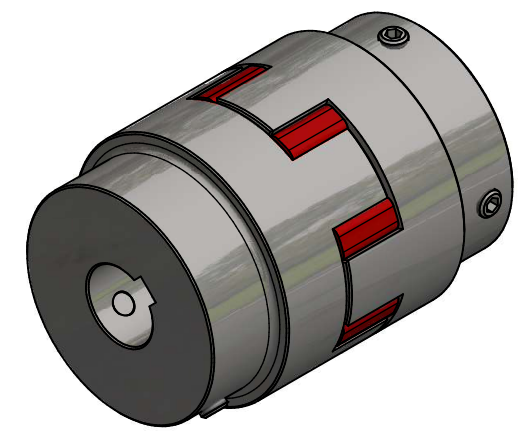
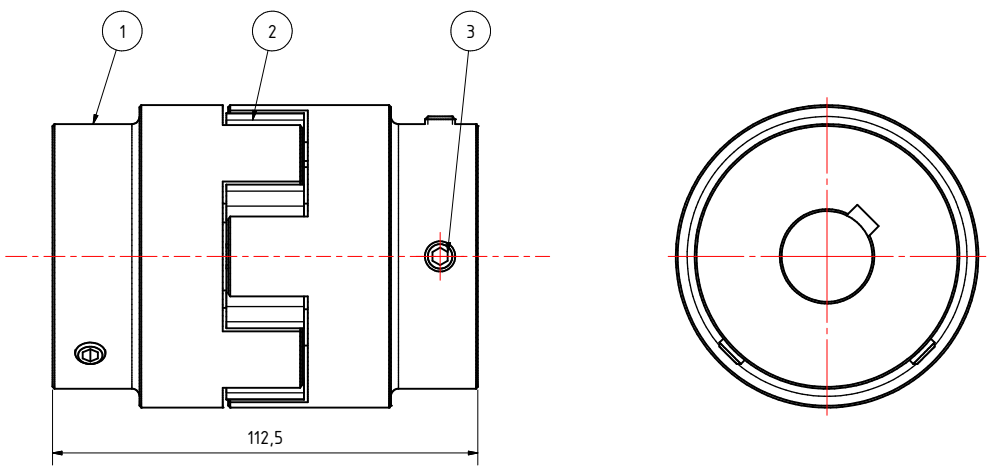
PARTS LIST			
ITEM	ITEM QTY	PART NUMBER	DESCRIPTION
1	2	AISC - C 3 x 3,5 - 33,465	U-Shape
2	3	AISC - C 3 x 3,5 - 5,024	U-Shape
6	2	AISC - L 2 x 2 x 3/16 - 9,465	Angle Steel
4	4	AISC - L 2 x 2 x 3/16 - 3,982	Angle Steel
5	3	AISC - L 2 x 2 x 3/16 - 9,024	Angle Steel
7	4	Sapata	
8	2	AISC - C 3 x 3,5 - 1,425	U-Shape
3	6	AISC - L 2 x 2 x 3/16 - 3,157	Angle Steel



DESIGN FOR EDUCACIONAL USE ONLY

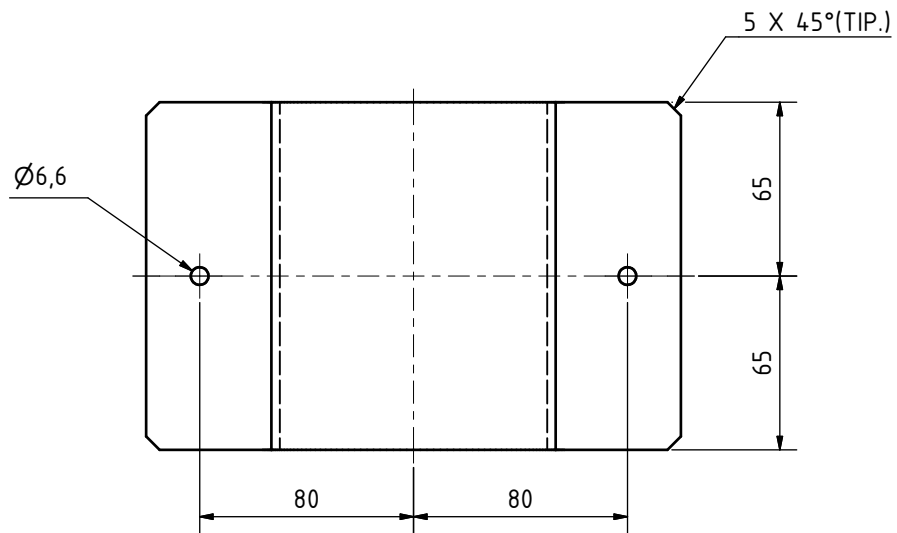
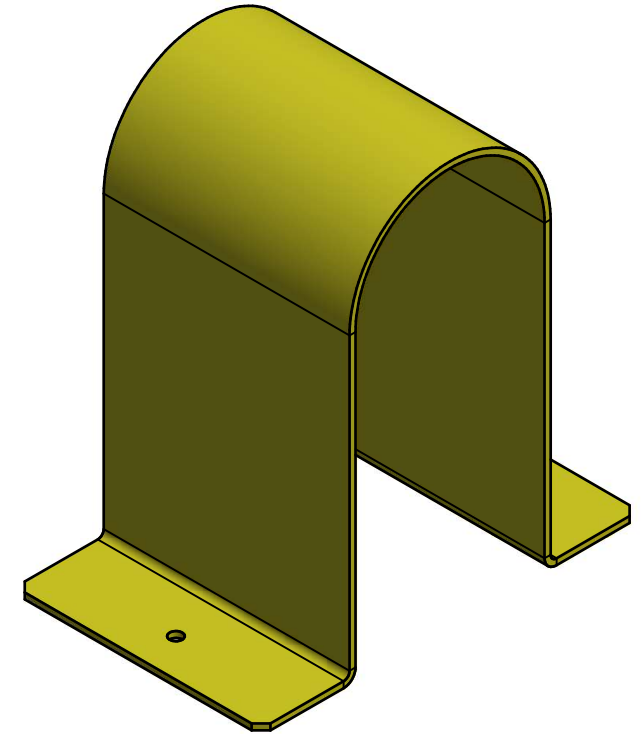
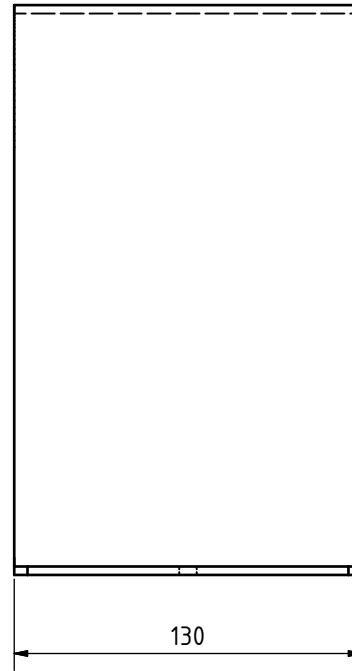
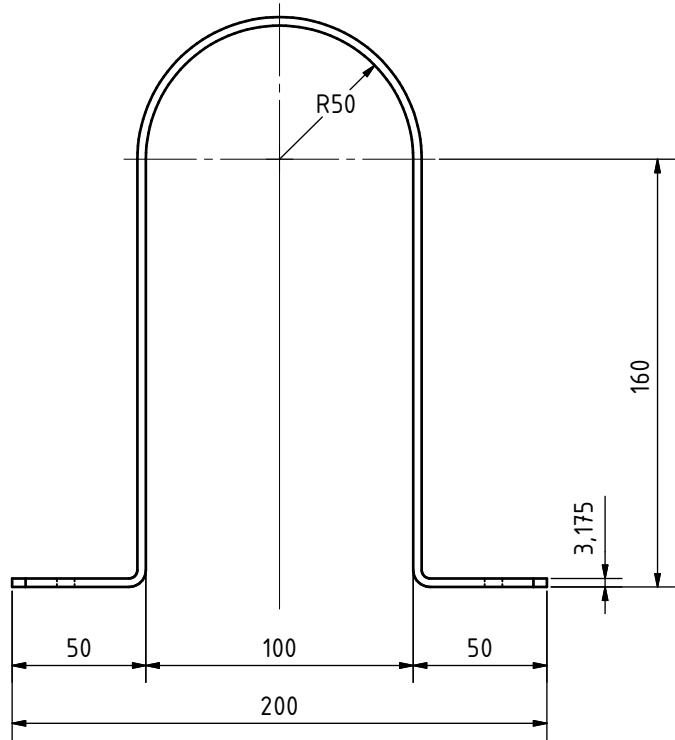
Date		Name	
Drawn	17/04/2018	AugustoBro	
Checked			
Standard			
BASE PUMP			1
			A2

PARTS LIST			
ITEM	QTY	PART NUMBER	DESCRIPTION
1	2	SLEEVE HUB	
2	1	DRIVE COUPLING ELEMENT	
3	4	DIN EN ISO 4026 - M8 x 25	Hexagon socket set screws with flat point



DESIGN FOR EDUCACIONAL USE ONLY

Date		Name	
Drawn	16/10/2017	AugustoBro	
Checked			
Standard			
COUPLING			1
			A2



DESIGN FOR EDUCACIONAL USE ONLY

				Date	Name				
				Drawn	19/04/2018	AugustoBro			
				Checked					
				Standard					
						PUMP PROTECTION		1	
								A3	
State	Changes	Date	Name						